

IFIT OFFICE SPACE FOR SUBLEASE

1500 South 1000 West | Logan, UT 84321

Property Id: 1060



\$16/ft NNN

PROPERTY HIGHLIGHTS

- 61,081 Total SQ/FT for Sublease
- First Floor 36,028 SQ/FT for Sublease
- Second Floor 25,053 SQ/FT for Sublease
- First Floor Divisible for Potential 3 Separate Tenants
- Second Floor Divisible for 2 Potential Tenants

RYAN REEVES
435.757.4445
ryanr@interstatecp.com

255 SOUTH MAIN ST. SUITE 100
LOGAN, UTAH 84321

OFFICE 435.213.9334



INTERSTATE COMMERCIAL
PROPERTIES

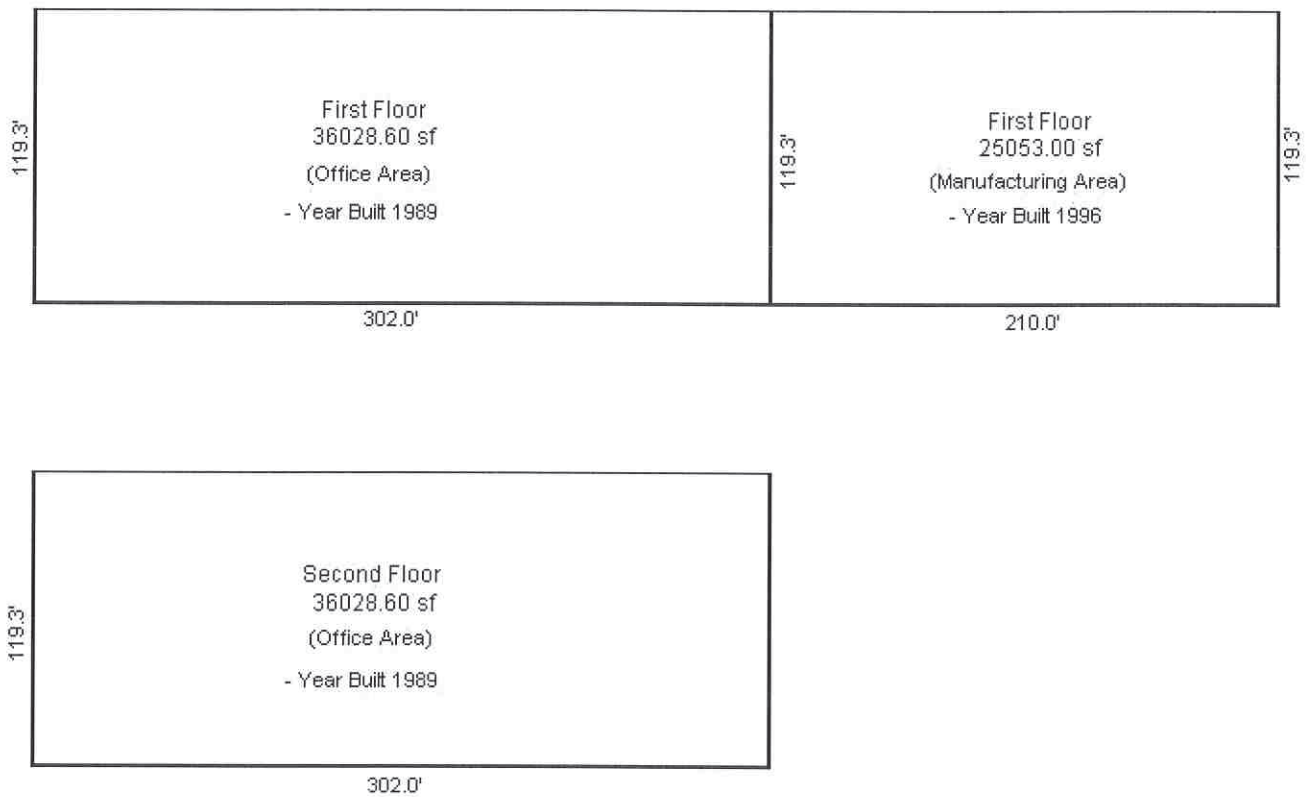
COMMERCIAL REAL ESTATE SERVICES

INTERSTATECP.COM

IFIT OFFICE SPACE FOR SUBLEASE

1500 South 1000 West | Logan, UT 84321

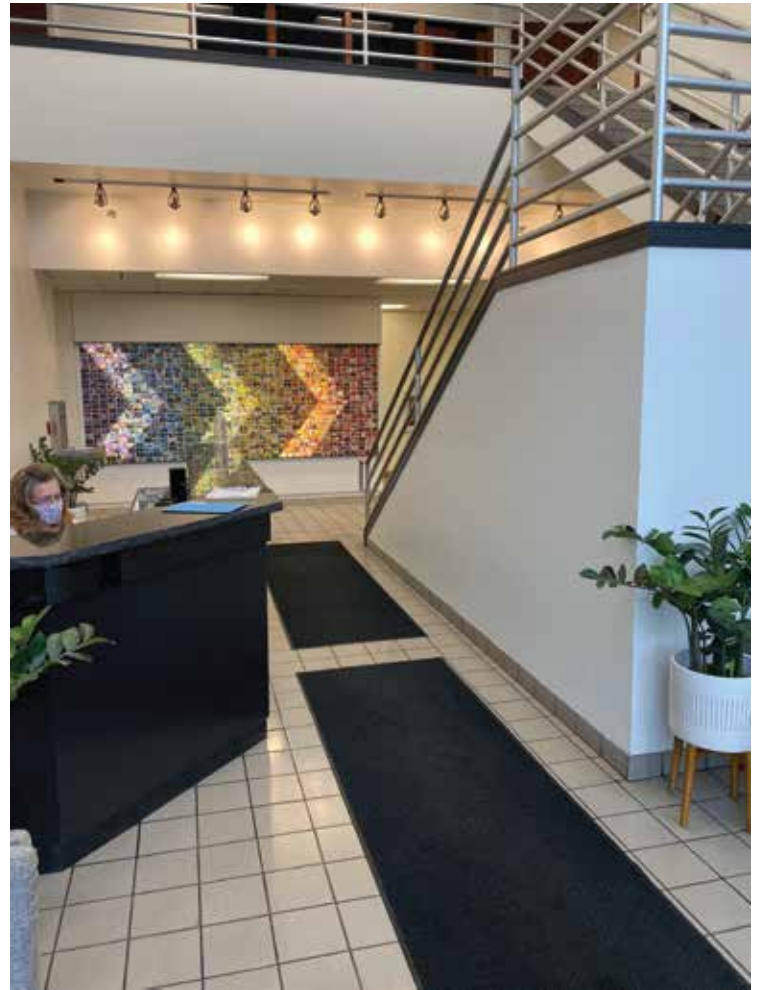
Property Id: 1060



IFIT OFFICE SPACE FOR SUBLEASE

1500 South 1000 West | Logan, UT 84321

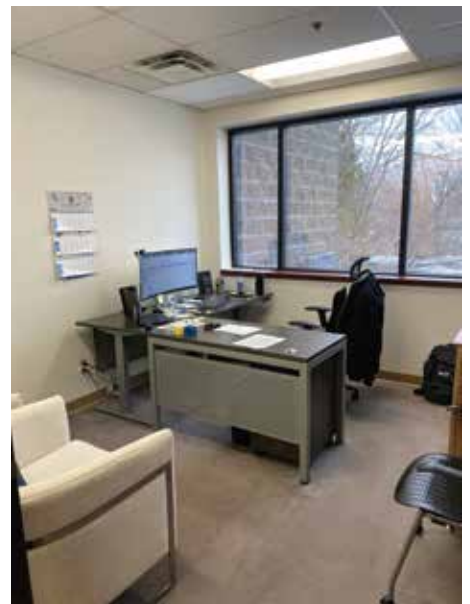
Property Id: 1060



IFIT OFFICE SPACE FOR SUBLEASE

1500 South 1000 West | Logan, UT 84321

Property Id: 1060



IFIT OFFICE SPACE FOR SUBLEASE

1500 South 1000 West | Logan, UT 84321

Property Id: 1060

