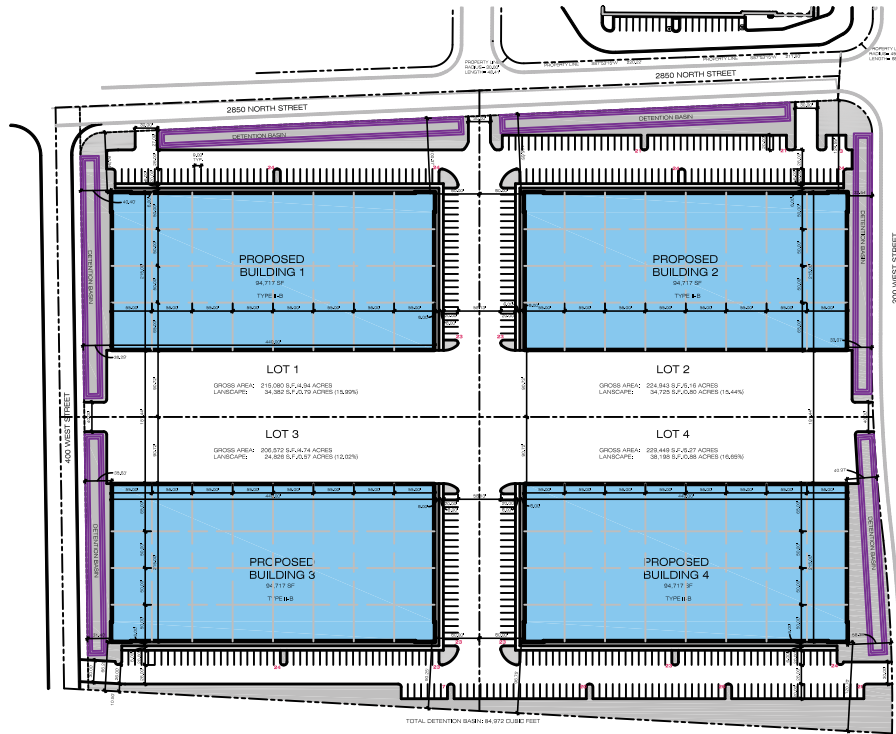


# LOGAN INDUSTRIAL WAREHOUSES

2850 N 200 W | North Logan, Utah 84341

Property Id: 1049



## PROPERTY HIGHLIGHTS

- New Construction
- Fall of 2022
- Approx. 5 Acre Lots
- 94,717 Total SF Concrete Title Buildings
- Lease Rate:
  - \$0.65/SF NNN and \$14/SF Office

**RYAN REEVES**  
435.757.4445  
ryan@interstatecp.com

**TREVOR KYLE**  
801.815.7255  
trevork@interstatecp.com

255 SOUTH MAIN ST. SUITE 100  
LOGAN, UTAH 84321

OFFICE 435.213.9334



INTERSTATE COMMERCIAL  
PROPERTIES

COMMERCIAL REAL ESTATE SERVICES

INTERSTATECP.COM

# LOGAN INDUSTRIAL WAREHOUSES

2850 N 200 W | North Logan, Utah 84341

Property Id: 1049

